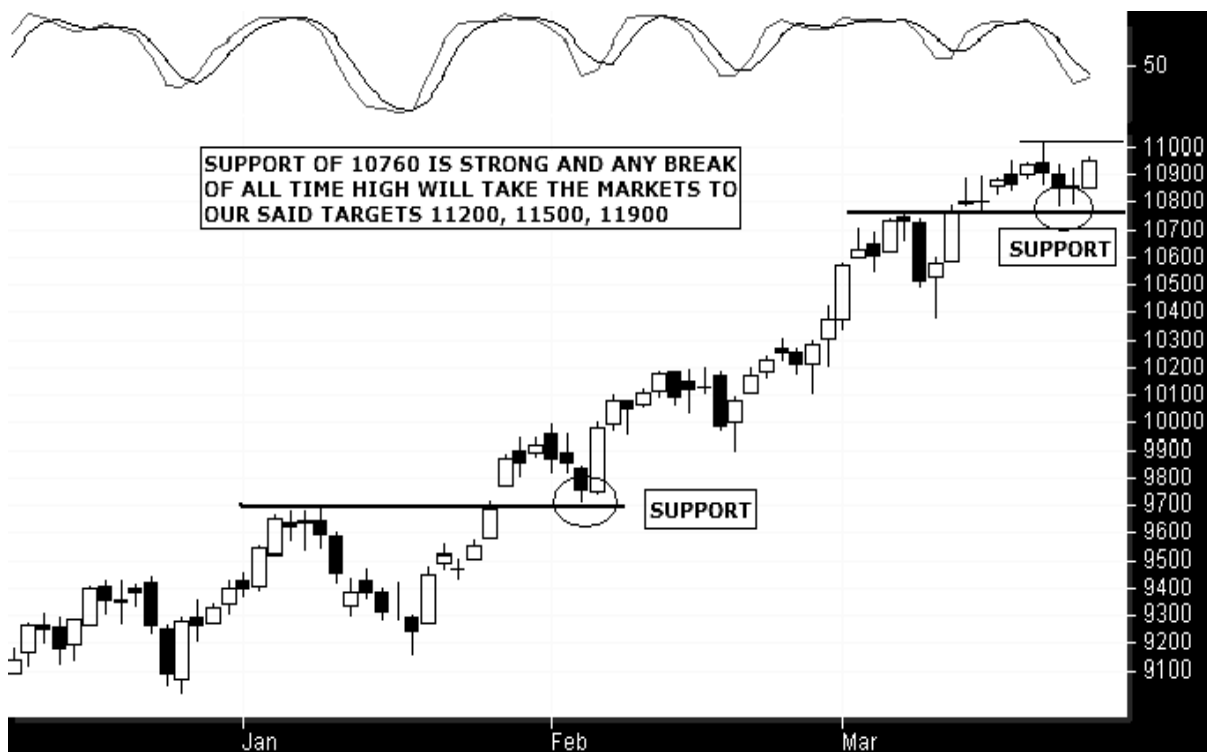


SENSEX STILL IN UPTREND.

The market is on the rise and we are still bullish until the support of 10760 is intact and will show us new high again.

The following are the supports and resistances for the day.

	R2	R1	PIVOT	S1	S2
NSE NIFTY	3313	3296	3270	3253	3226
SENSEX	11036	10993	10922	10879	10808



On the above chart we can see the similar support which was indicated at 9700 levels, and we saw a considerable rise from that level, and same kind of formation is seen again at 10760 level, so if the sensex now breaks the top we can see the rise till our target levels 11200/11500/11900.

We still hold our positional NIFTY Future Buy at 3100 levels and we advice the stop now at 3200 level, and lock the 100 point profit. In total, this is the third positional call, and we have earned 500 points till now.

Break out calls, which all of you await every week and we are always hit on these calls.

The principle which you need to follow is to buy these only on the price breakout and strict stops have to be placed.

Buy Birla Ericsson above 30 Stop at 27 Target 34 **

Buy Titanor above 248 Stop 242 Targets 271/290/300 ****

Buy Prism Cement above 30 Stop 28 Target 35 ****

Buy Ind Swift Lab. above 116 Stop 113 Targets 125/130 ***

Buy Nahar Exports above 80 Stop 78 Target 87. **

Buy Shiv Vani Oil above 211 Stop at 209 Targets 220/232 ***

Buy Praj Ind above 113.50 Stop 110 Targets 120/125 ***

Buy Tata Steel above 495 Stop 492 Targets 500/510. ****

SAIL is also very strong above its high watch out for that counter also.

Buy ROLTA above 242 Stop 239 Targets 251/255/280 *****

Buy India Info above 200 Stop 196 Targets 209/212 **

Buy ITI Ltd. above 71 stop 70.50 Target 75/77 ****

Buy Federal Bank above 196 Stop 194 Targets 201/206 **

Buy Berger Paint above 82 Stop 80 Target 87. ****

Place a buy above the trigger and enjoy the rise. Keep trailing stops as the rise begins, and keep booking the profits as the trend may be volatile.

Resistance and support levels for 27th March 2006.

Name	R2	R1	Pivot	S1	S2
A.C.C.	777	770	763	757	750
ABB LTD.	3044	3018	2994	2968	2944
ALLHABAD BNK	81	81	80	79	79
ALOK INDS	72	72	71	70	69
ANDHRA BANK	81	81	80	80	80
ARVIND MILLS	93	92	91	91	90
ASHOK LEYL	42	42	41	41	40
AUROBINDO PH	671	660	644	633	617
BAJAJ AUTO	2789	2764	2738	2714	2688
BALLARPUR IN	134	133	131	130	129
BANK OF BARO	227	226	225	223	222
BANK OF IND.	136	135	133	132	130
BHARAT ELEC.	1412	1396	1384	1368	1356
BHARAT FORGE	456	451	444	439	431
BHARAT PETRO	446	440	436	431	427
BHARTI TELEV	390	386	380	376	371
BHEL	2239	2201	2171	2132	2103
BONGAIGAON R	69	68	68	67	66
CANARA BANK	271	268	266	263	261
CENTURY TEXT	409	400	393	383	376
CESC LTD	348	342	331	324	313
CHAMBAL FERT	41	40	40	39	39
CHENNAI PETR	234	232	230	228	226
CIPLA	653	640	622	608	590
COLGATE	416	413	409	406	402
CORPN. BANK	398	392	387	382	377
CUMMINSIND	248	244	239	235	231
DABUR INDIA	123	122	120	118	116
DIVIS LAB	1743	1718	1699	1675	1656
DR.REDDY	1484	1458	1434	1409	1384
ESCORTS	91	89	89	88	87
ESSAR OIL	41	40	39	38	37
FEDERAL BANK	206	200	191	185	177
G.E.SHIPPING	277	272	265	259	252
GAIL	297	294	290	286	282
GLAXO SMITHK	1379	1363	1347	1331	1315
GRASIM IND.	2017	1993	1974	1950	1931
GUJ AMB CEME	98	97	96	96	95

GUJ.NARMADA	117	116	115	114	114
HCL TECHNOLO	646	631	621	606	596
HDFC BANK	758	746	738	727	718
HERO HONDA	916	903	887	873	857
HIND.LEVER	260	258	256	254	252
HIND.PETROL	342	336	328	322	314
HINDALCO	182	176	165	160	149
HOUS DEV FIN	1346	1330	1319	1303	1292
I-FLEX	1472	1434	1367	1329	1262
ICICI BANK	608	603	596	591	584
IDBI	81	80	79	77	77
IDFC	69	69	69	68	68
INDIA CEMENT	168	166	165	163	161
INDIAN HOTEL	1359	1341	1318	1301	1278
INDIAN OIL	577	573	567	564	558
INDUS IND BK	45	44	44	43	43
INDUST.FIN.C	10	10	10	9	9
INFOSYS TECH	2932	2914	2897	2879	2862
IOB	98	96	95	93	92
IPCL	270	259	251	240	232
ITC	195	190	182	177	169
IVRCL INFRAS	1454	1429	1392	1367	1331
JAMMU&K BANK	484	477	467	460	451
JETAIRWAYSEQ	984	966	940	922	896
JIND STAINLE	113	112	111	110	109
JINDL STL&PO	1802	1783	1764	1745	1726
JPHYDRO	29	29	29	29	28
KARNATAK BNK	103	101	101	99	99
KOCHI REFINE	179	178	177	175	174
LIC H.FINAN	199	195	190	186	181
MAH & MAH	632	628	624	620	616
MAH.SEAMLESS	657	645	636	623	614
MAHANGR TELE	188	185	182	179	176
MARUTI	856	847	840	831	824
MATRIXLABSEQ	298	292	282	276	266
MPHASISBFLEQ	209	205	202	197	194
MRPL	43	43	43	42	42
NAGAR.FERT	14	14	14	13	13
NATION ALUMI	282	278	275	272	268
NDTV EQ	230	228	226	224	223
NEYVELI LIGN	77	77	76	75	74
NICHOLAS PIR	257	256	253	251	249
NSE NIFTY	3313	3296	3270	3253	3226

NTPC EQ	138	137	136	135	134
ONGC CORP.	1241	1231	1216	1206	1191
ORCHID CHEM	356	352	349	345	342
ORIENT.BANK	243	239	237	233	231
PATNI EQ	510	486	471	447	432
PNB	477	472	463	458	449
POLARIS SOFT	115	115	114	113	112
PUNJLLOYD	1094	1087	1076	1069	1058
RANBAXY LAB.	413	408	401	396	388
REL EQ	616	612	607	603	597
REL.CAPITAL	514	509	503	497	491
RELIANCE	790	786	781	777	772
SATYAM COMP	832	826	818	812	803
SHIPP.CORPN.	159	157	156	155	153
SIEMENS	5736	5706	5670	5640	5604
SRF LTD.	274	271	269	266	264
STATE BANK	998	990	984	976	969
STER EQ	1627	1590	1522	1485	1418
STRIDES ARCO	360	358	355	353	350
SUN PHARMA.	845	837	828	820	811
SUZLON	1396	1362	1341	1307	1286
SYNDICATE BK	92	91	90	89	88
TATA CHEM	259	257	255	254	251
TATA POWER	605	596	581	572	557
TATA TEA	903	894	879	870	855
TATAMOTORSEQ	924	916	908	900	892
TATASTEEL	501	497	491	487	481
TCS EQ	1924	1908	1889	1872	1853
TITAN IND.	853	844	837	828	821
TVS MOTOR	137	135	133	132	129
UNION BANK	125	124	122	121	119
UTI BANK	378	368	358	348	338
VIDESH SANCH	431	425	420	415	410
VIJAYA BANK	52	52	51	51	51
WIPRO	542	537	529	524	517
WOCKHARD LTD	538	525	518	505	498

www.profitsunlimited.biz

Disclaimer:

There is a risk of financial loss in futures and options trading. It takes hard work to have success. Please use sound money management when trading futures. Nothing on this report is intended to be a trading recommendation to buy or sell futures or options. All information has been obtained by the process of technical analysis, but accuracy is not guaranteed. Readers are solely responsible for how they use the information on this report.